



## Teen Choice Checking

### Features include

- Mobile Banking
- Debit Card
- eStatements

Available to teens age 13 - 17  
with qualified adult member



**VISA** Gift Cards and reloadable travel cards are available to purchase at our branches.

## The 50/30/20 Rule

### 20% Savings & Debt

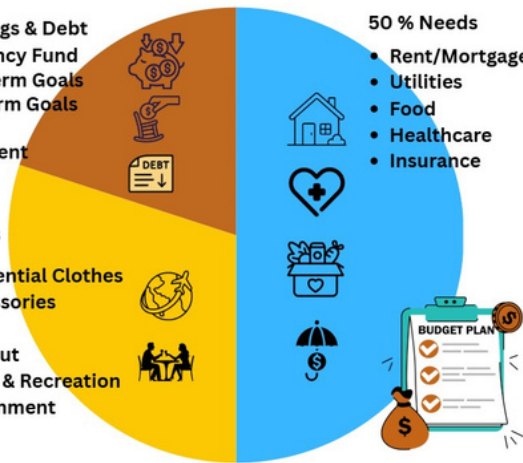
- Emergency Fund
- Short Term Goals
- Loan Term Goals
- College
- Retirement

### 30% Wants

- Non Essential Clothes & Accessories
- Travel
- Dining Out
- Hobbies & Recreation
- Entertainment

### 50% Needs

- Rent/Mortgage
- Utilities
- Food
- Healthcare
- Insurance



## Contact Information



912-368-2477 Opt 5



memberservices  
@geovistacu.com

**eStatements are convenient and secure. Sign up in your online banking or app.**

**Don't share your online banking or card information**

# Stay in the Know with Geo

## April 2026

# The GeoBuzz

## April is Financial Literacy Month

The Financial Literacy Month was first recognized in the USA in April 2004. This was done to highlight the importance of being financially literate and to encourage people to learn about finances and the ways and techniques that can help to become financially smart.

## The 50/30/20 Rule in Financial Literacy

Allocate your after-tax income into three categories: 50% for Needs, 30% for Wants and 20% for Savings & Debt repayment

## Emergency and Retirement Savings

Emergency funds are designated cash reserves to cover unexpected expenses such as job loss, repairs, medical bills. These savings help you avoid debt. An Individual Retirement Accounts (IRA) can supplement your retirement income.

## Youth Accounts

You can start teaching financial literacy early. We offer special accounts for minors starting with the Savasaurus Club for kids ages 6 - 12 and the Teen Choice account starting at age 13 - 17. The Teen Choice Checking is added to the savings account and has most checking account features.

## Tax Day!

Tax Day is April 15, 2026. Tax preparation discounts are still available. Please check our website for more information.

Although you may have eStatements, your mailing address must be correct.